

Solar farms deal to soak up millions

Kerrie Sinclair

A QUEENSLAND solar energy company has secured contracts to build solar farms worth \$185 million in Italy, including projects that will dwarf any solar farm currently operating in Australia.

one 10MW facility. The solar farms will be owned and operated by investment companies from Europe, the US and South-East Asia.

Currently, Australia's largest solar power station is a 4MW facility at Liddell in New South Wales.

Eco-Kinetics, which is based at Stappilton, south of Brisbane, has signed a heads of agreement for two contracts to build a combined 40 megawatts of installed electricity capacity, including one 20MW project and

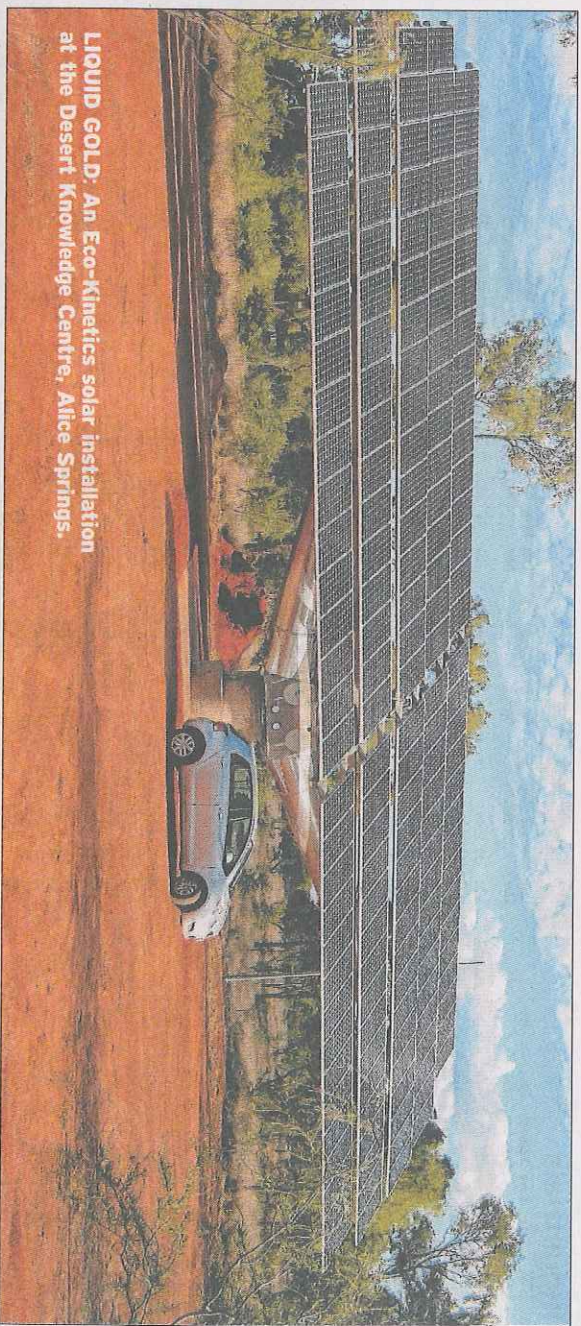
Eco-Kinetics, which was acquired in January last year by Sydney-based renewable energy company CBD Energy, provides engineering design, supply and installation services for wind and solar power facili-

ties. CBD Energy yesterday said construction was scheduled to start in May.

CBD also yesterday reported its financial results for the six months to December 31, which showed how Queensland-based

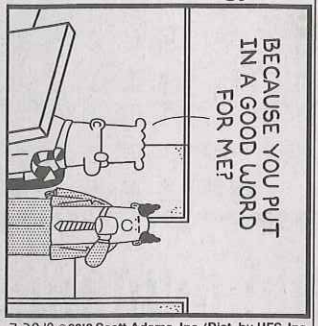
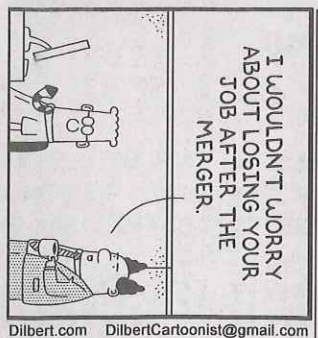
Eco-Kinetics powered a swing back to profitability for its parent company.

Eco-Kinetics' total revenue for the six months was \$60.4 million, with a pretax profit of \$7.1 million. Parent CBD Energy's consolidated revenue was \$7.4 million, up from \$5.9 million a year earlier, and its net profit was \$2.37 million, up from a year-ago loss of \$3.49 million.



LIQUID GOLD: An Eco-Kinetics solar installation at the Desert Knowledge Centre, Alice Springs.

DILBERT



Dilbert.com DilbertCartoonist@gmail.com

7-20-10 © 2010 Scott Adams, Inc./Dist. by UFS, Inc.

by SCOTT ADAMS

Gas could power minerals hub

Tony Grant-Taylor

COAL seam gas explorers in Queensland's Galilee Basin believe they may be able to come up with a better solution to powering the state's northwest minerals province than building an expensive transmission line all the way from Townsville to Mount Isa.

CSG exploration

in the Galilee was in its infancy, Westside Corporation chief executive Julie Beebby told yesterday's Coal Seam Methane WORLD conference in Brisbane that piping basin gas to the northwest could be a more economic proposition.

Westside has about 14,000sq km of exploration acreage in the northern Galilee about 300km from Mount Isa.

The State Government and other parties are studying the powerline proposal, dubbed CopperString.

Dr Beebby said Westside and joint venture partner Mitsui were building production and reserves at their Meridian joint venture near Moura, where there was room to increase production - which is currently sold to the Queensland gas grid.